

**HOFMANN** 

**geoliner<sup>®</sup>770**



**PRECISION  
WHEEL ALIGNMENT**

*WHEEL SERVICE EXCELLENCE*

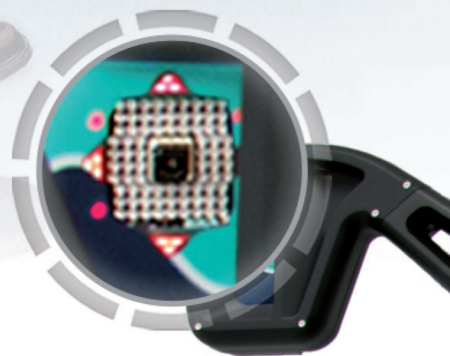
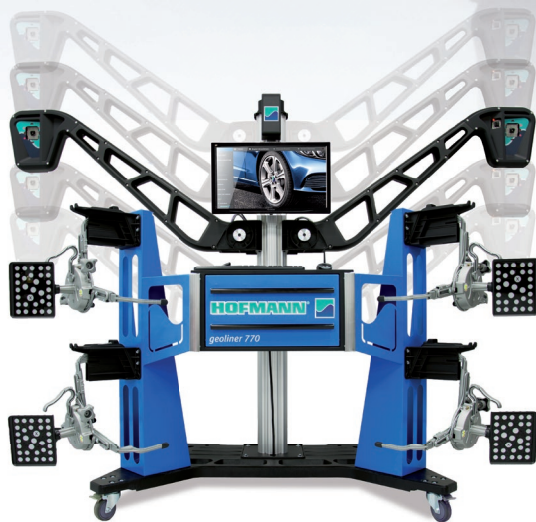
geoliner®770

## PREMIUM SERVICE

### THE ULTIMATE IN PRECISION ALIGNMENT

The geoliner® 770 is a mobile system designed for precise and accurate measurements for a precise wheel alignment service.

Our **Advanced Notification** system monitors the entire alignment process and automatically compensates for possible errors, alerting the technician if corrective action is required, which ensures an accurate and efficient alignment service.



#### VODI™

Exclusive **Vehicle Orientation Directional Indicator (VODI)** helps guide the technician through the measurement process when the monitor is not in view.



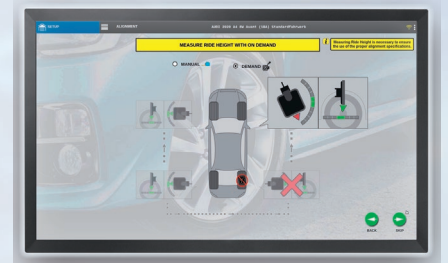
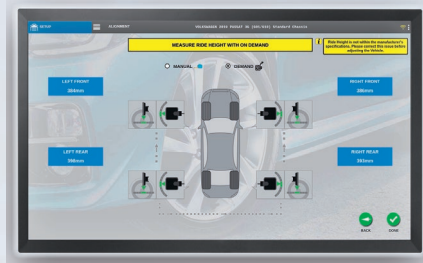
#### AUTOMATIC HEIGHT TRACKING

Automatic height tracking cameras follow the XD targets as the vehicle is raised on the rack, improving productivity while maintaining precision.

#### MOBILITY

The *geoliner 770* folding camera beams and low center of gravity provide convenient mobility between alignment bays.

# MEASUREMENT MADE EASY



## RIDE HEIGHT MEASUREMENT

Measure the vehicle ride height to guarantee a proper adjustment. The *geoliner 770* offers multiple options for ride height measurement, depending on the vehicle type and manufacturer. Eliminate manual data entry, speed up measuring, and increase accuracy using our specially designed, optional Ride Height Targets.

## FENDER TARGETS

No manual entry is required when using our real-time ride height Fender Targets with easy suction cup attachment. Alignment specifications adjust automatically according to the ride height measurement.

## TARGET IMAGING POINTER

Alternatively, the Target Imaging Pointer (TIP) measures ride height more accurately than manual measuring, to obtain proper alignment specifications.



## AC400 CLAMPS

Clamp attaches to the tyre with limited clamping force without touching the rim for a safe, fast and consistent placement every time.



## AC100 CLAMPS

Fast and easy to use with self-centering design, two-sided claws provide reliable clamping, even over hub caps.

## EZ-TOE

Our advanced software makes it easy to quickly and accurately measure toe angle, allowing technicians to turn the wheel to access challenging adjustment points without using a steering wheel holder.

## WHEELS OFF ADJUSTMENT

Remove the wheel and use the wheels off hub adapter to attach the target directly to a brake rotor for easier access to adjustment area.

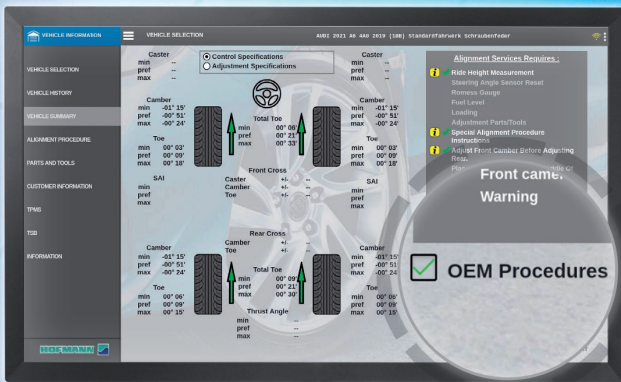
# OEM GUIDED PROCEDURES\*

The *geoliner 770* advanced software offers instant access to real-time aftermarket OEM recommended adjustments and repair information, as well as the correct clamps required for a precise, OEM-specified wheel alignment service.

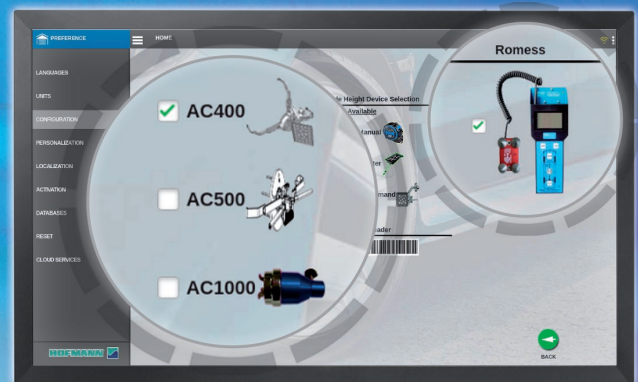
\*Available in 2022



## OEM PROCEDURES



## SPECIFIC OEM CLAMPS & ROMESS



# DESIGNED FOR PROFESSIONALS



## SMART NOTIFICATION SYSTEM

The *geoliner 770* offers advanced XD cameras and a top-of-the-line monitoring system capable of finding errors during the alignment process.

The system will either fix the problem by itself or notify the technician when necessary in order to save time and ensure accuracy on every alignment.

## ADVANCED MEASUREMENTS

Measurements designed for advanced suspension troubleshooting and modified suspensions; including ride height, SAI, frame angle, max turn, and toe out on turns.

## CROSS DIMENSIONS

Values for frame verification are provided to confirm that the suspension is square. This measurement can identify frame or structural damage before alignment adjustments are made.

## WHEEL DIAMETER

This measurement will notify the operator of potentially mismatched tyres or excessive tread wear, both potential causes of vehicle pulling and drive train damage.

**WHEEL SERVICE EXCELLENCE**

# QUICK ALIGNMENT CHECK

*PROVIDE THE ULTIMATE SERVICE FOR YOUR CUSTOMERS  
BY QUICKLY IDENTIFYING IF THE VEHICLE NEEDS  
ALIGNMENT SERVICE*

IMPROVE YOUR ALIGNMENT SALES  
with Quick Alignment Check.

In less than a minute you can  
quickly identify if the vehicle  
needs an adjustment with  
the Quick Alignment Check.

Provide a detailed report  
that includes critical vehicle  
measurements, such as:

- Track width
- Front and rear toe
- Camber
- Wheelbase
- Wheel diameter
- Cross dimensions



# MAXIMIZE PRODUCTIVITY



**THE GEOLINER 770 IS WIFI® ENABLED, ALLOWING YOU TO:**

**SAVE INFORMATION** to a secure cloud server and access reports remotely to send to customers via email or to print from anywhere in the shop.

**CONNECT A TABLET** to use as a secondary display during the alignment for added mobility.

**STAY UP-TO-DATE** with automatic access to software and specification updates.

## TECHNICAL SPECIFICATIONS

Tyre diameter	19"- 39"   48-99cm
Track width	48"- 96"   122-244cm
Wheel base	79"- 180"   201-457cm
Power requirement	100-230V AC (must have Earth ground) 15 amp Circuit, 50/60HZ, UL201, C22.2, CE Approved

## INCLUDED ACCESSORIES

- Steering Wheel Holder
- Brake Pedal Depressor
- Color Inkjet Printer
- (2) Wheel Chocks
- 24" Flat Panel Monitor
- Wheel Clamps with XD Targets

### FIND A DISTRIBUTOR

[hofmann-equipment.com/en/distributor](http://hofmann-equipment.com/en/distributor)

**FRANCE**  
+33 134 48 58 78

**GERMANY**  
+49 8634 622 0

**ITALY**  
+39 0522 733 411

**UK**  
+44 118 929 6811



Snap-on® Total Shop Solutions offers a wide range of garage equipment solutions for workshops, garages, car dealers and tyre shops, thanks to the specific solutions provided by its portfolio of premium brands. Hofmann® is a brand of TSS and is committed to product innovation and improvement. Therefore, specifications listed in this sell sheet may change without notice. ©2021 Snap-on Incorporated. Hofmann® is a trademark, registered in the United States and other countries, of Snap-on Incorporated. All rights reserved. All other marks are marks of their respective holders. sswa21064a (EU\_en) 12/2021

HOFMANN-EQUIPMENT.COM

**HOFMANN**